



Compact resilient commercial floorcovering



Century Excel

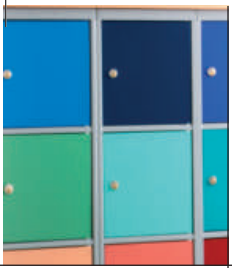
Striking 3D designs

Easy, low-cost maintenance

No wax - No polish

Extremely high wear-resistance

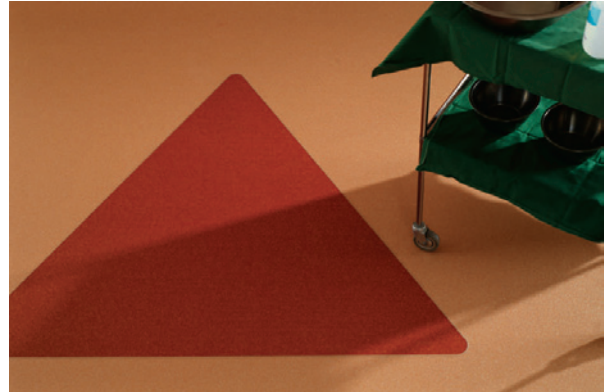
 **Tarkett**
COMMERCIAL



Century Excel: A bright view of the future

For over 50 years we have developed new floor-covering solutions based on people's needs. Our extensive experience has given us the ability to make the very best use of high technology, to create both design and functional benefits that will meet the future's expectations.

Our Century collection is the very best we can offer in compact vinyl floorings - we have brought together top flooring performance and a high design profile. The Century Excel range offers two strong design lines with a universal feel, Cosmos and Sideral, and exceptional wear resistance. The design appearances are created from our overall design concept - playing with physical aspects of materials in our surroundings.

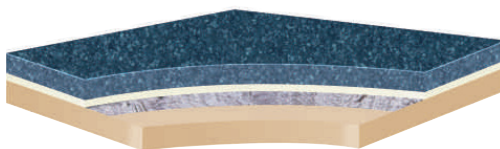


Top performance and low maintenance

Century Excel is one of the market's best compact vinyl floorings, thanks to the thick wear layer and the unique product construction. The Century Excel flooring solution is an excellent choice from both functional and economic aspects. The total construction ensures extraordinary static indentation properties and a tough, compact surface that assists the movements of heavy items on the flooring.

The 1 mm PUR-reinforced PVC wear layer gives exceptional resistance to abrasion, scuffing and tearing. It also means less cleaning and maintenance - no wax and no polish, throughout the flooring's lifetime. Maintenance costs can be reduced by up to 30%. Bearing in mind that 92% of a flooring's total life cycle cost is for maintenance, substantial savings can be made.

The Sanitized treatment protects the floorcovering from premature ageing caused by micro-organisms, and also gives hygiene benefits in sensitive areas.



1. PUR-reinforced wear layer: very high resistance to abrasion and easy maintenance
2. Glass fibre non-woven reinforcement: excellent dimensional stability
3. Solid homogeneous calendared sheet: optimum resistance to tearing

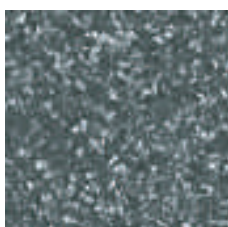
For the sake of the environment

All the raw materials in Century Excel have been selected to limit environmental impact, and our use of recycled materials conserves natural resources. The improved cleaning characteristics are also beneficial to the environment, because they greatly reduce the need for water and chemicals.

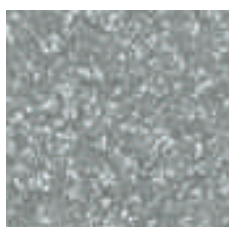


Century Excel Cosmos

The Cosmos design line is inspired by the vegetal world, which is connected with feelings of comfort and confidence. The rich and saturated colours combined with the subtle and delicate pattern will create a warm and dynamic atmosphere suitable for all areas where people meet and spend time together.



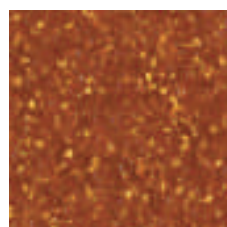
CX 311 17



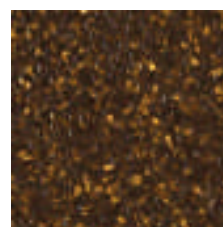
CX 311 15



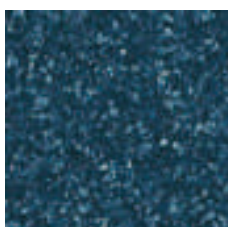
CX 311 25



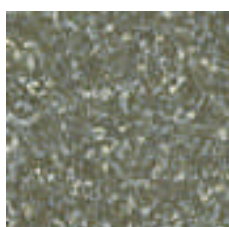
CX 311 47



CX 311 37



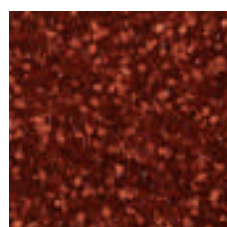
CX 311 77



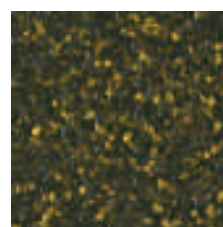
CX 311 85



CX 311 35



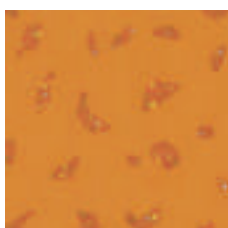
CX 311 57



CX 311 87

Century Excel Sideral

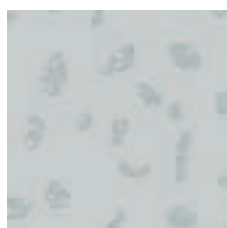
The Sideral design line is inspired by synthetic materials, which have an innovative image distinguished by colour, transparency and plasticity. The tasteful colours and vibrant pattern effect give room for playfulness and unexpected yet stylish interior design effects.



CY 312 47



CY 312 32



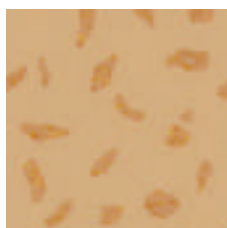
CY 312 12



CY 312 82



CY 312 57



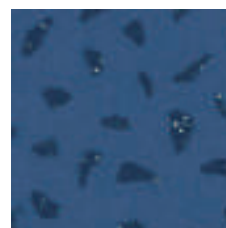
CY 312 35



CY 312 15



CY 312 76



CY 312 77







Century Excel

DESCRIPTION

Compact heterogeneous vinyl floorcovering, glass fibre stabilized. Clear wear layer, class T.
PUR reinforcement for easy maintenance. AS, Sanitized®, bacteriostatic and fungistatic built in treatment.
Product standard : EN 649.

Technical data	Standards	Century Excel
Classification	EN 685 Commercial very heavy Industrial heavy	34 43
Total thickness	EN 428	2.30 mm
Wear layer thickness	EN 429	1.00 mm
Total weight	EN 430	3 400 g/m ²
Abrasion group	EN 660-1	Group T: ≤ 0.08 mm
Residual indentation	EN 433	≤ 0.05 mm
Furniture leg	EN 424	No damage
Castor chair	EN 425	No damage
Dimensional stability	EN 434	≤ 0.10 %
Curl resultant to heat	EN 434	≤ 8 mm
Reaction to fire	EN 13501-1 NF P 92506 NBN S-21 203 ASTM E648	B _{f1} s1 M3 A2 Category 1
Slip resistance	DIN 51130 pr EN 13893	R10 ≥ 0.3
Electrostatic properties Static electrical charge Electrical resistance Grading	EN 1815 EN 1081 IEC 1340-4-1	< 2 kV R ₁ > 10 ¹⁰ Ohms ASF Class 2
Impact sound reduction	EN ISO 140-8 EN ISO 717/2	ΔL _w = 5 dB
Acoustic improvement	NF S 31- 074	Ln,e,w = 74 dB
Light fastness	EN ISO 105-B02	≥ 6
Chemical resistance	EN 423	High resistance
Anti fungi treatment Resistance to microbes and bacteria	EN ISO 846	Sanitized Grade 1 - High fungi effect
Thermal resistance Underfloor heating	EN 12524	0.03 m ² K/W Suitable
Colours		Cosmos: 10 Sideral: 9
Form of delivery	EN 426	Rolls: 23 lm x 2 m

The above information is subject to modifications for the benefit of further improvement (04/04).

For more detailed technical information, please contact Tarkett.

Follow Tarkett's installation and maintenance instructions carefully. These instructions are available upon request.

Australia: Tarkett Australia Pty Ltd – Tel. +61 2 96 34 73 73 • **Austria:** Tarkett Ges.m.b.H. – Tel. +43 1 47 88 062 • **Belgium:** S.A. Tarkett NV – Tel. +32 2 520 04 67 • **Canada:** Tarkett Inc. – Tel. +1 450 293 3173 • **China:** Tarkett Asia Pacific Limited Shanghai Representative Office – Tel. +86 (21) 62 88 15 38/39 • **Denmark:** Tarkett A/S – Tel. +45 43 90 60 11 • **Finland:** Tarkett Oy – Tel. +358 9 5406 5870 • **France:** Tarkett SAS – Tel. +33 1 41 20 42 49 • **Germany:** Tarkett Vertriebs GmbH & Co. KG, Bereich Objekt – Tel. +49 6233 810 • **Greece:** Tarkett Monoprosopi Ltd – Tel. +30 2 10 576 3889 • **Hong Kong:** Tarkett Asia Pacific Ltd. – Tel. +852 2511 8716 • **Italy:** Tarkett S.p.A. – Tel. +39 02 319 211 • **Middle East:** Tarkett Middle East – Tel. +961 1 75 2363/4 • **Netherlands:** Tarkett Benelux B.V. – Tel. +31 76 57 80 700 • **Norway:** Tarkett AS – Tel. +47 32 20 92 00 • **Poland:** Tarkett Polska Sp. z o.o. – Tel. +48 22 833 10 97 • **Portugal:** Tarkett SA – Tel. +351 21 756 75 40 • **Russian Federation:** Tarkett Russia – Tel. +7 095 777 69 83 • **Singapore:** Tarkett Far East – Tel. +65 6743 53 84 • **South East Europe:** Tarkett Trade d.o.o. – Tel. +381 21 7557 649 • **Spain:** Tarkett Revestimientos SA – Tel. +34 91 358 00 35 • **Sweden:** Tarkett Sverige AB – Tel. +46 8 625 19 00 • **Switzerland:** Tarkett GmbH – Tel. +41 62 737 90 50 • **United Kingdom:** Tarkett Ltd – Tel. +44 (0)1905 342700 • **United States:** Tarkett Inc. USA – Tel. +1 713 869 5811
Tarkett International: Tel. +49 6233 811 755

www.tarkett-commercial.com

Ref.	Welding Rods N°
CX 311 15	1287 006
CX 311 17	3291 216 6
CX 311 25	1287 005
CX 311 35	3292 101 6
CX 311 37	1287 002
CX 311 47	1287 007
CX 311 57	1287 008
CX 311 77	1287 001
CX 311 85	1287 003
CX 311 87	1287 004
CY 312 12	3291 811 6
CY 312 15	3291 355 6
CY 312 32	3291 209 6
CY 312 35	3291 205 6
CY 312 47	1287 014
CY 312 57	1287 016
CY 312 76	3288 306 6
CY 312 77	3291 621 6
CY 312 82	1287 015

Ref.	NCS N°
CX 311 15	NCS S 4502-B
CX 311 17	NCS S 6502-B
CX 311 25	NCS S 3005-Y20R
CX 311 35	NCS S 3020-Y30R
CX 311 37	NCS S 7020-Y10R
CX 311 47	NCS S 4050-Y50R
CX 311 57	NCS S 5040-Y80R
CX 311 77	NCS S 7020-B
CX 311 85	NCS S 5005-G50Y
CX 311 87	NCS S 6030-G70Y
CY 312 12	NCS S 2005-R80B
CY 312 15	NCS S 4005-R80B
CY 312 32	NCS S 2010-Y30R
CY 312 35	NCS S 2030-Y20R
CY 312 47	NCS S 2060-Y20R
CY 312 57	NCS S 3060-Y70R
CY 312 76	NCS S 3030-B30G
CY 312 77	NCS S 5030-R80B
CY 312 82	NCS S 2030-G30Y

Century Excel Product brochure - English - Y K43 - SAP 3733350405 - 04/04